

**WP SERIES**

WP Series Industrial Panel PCs - Designed for Harsh Environments



WP series Stainless steel Resistive/Multi-touch Panel PC is designed to meet the challenges in critical environments. It supports a wide operating temperature range from -20°C to 60°C and can with stand vibration. PC combined with a fully IP69K rated water/dust-proof enclosure and 6 x M12-type connectors, can resist ingress of high-temperature steam and pressure washing, well suited for food and chemical industry, as well as outdoor applications such as gas station or parking management system.

The stainless steel design protects all connections and cables against contamination and chemical influences. WP series is control and operating devices that meet strict hygiene requirements, which is quite important in the pharmaceutical, agriculture, food, beverage and chemical industries.

- OS : Windows7/WES7, Windows10, Linux.
- CPU : Intel® Celeron®J1900
- Size : 15", 19" and 21.5".



**Rugged IP69K stainless steel case**  
High-strength 304 stainless steel housing that meets IP69K protection resistance detergent.



**Neutral front Panel**  
Neutral front panel design without logo, accept print logo service, as well as neutral packing optional.



**Excellent touch accuracy**  
Touchscreen with water, dust, oil proof, click life is 50 million times.



**Flexible modular design**  
Intel® Celeron® J1900, Intel® Core™ i5-7200, easy for maintenance and upgrade.



**Fanless design**  
Fanless design but working temperature is -20 to 60 °C.



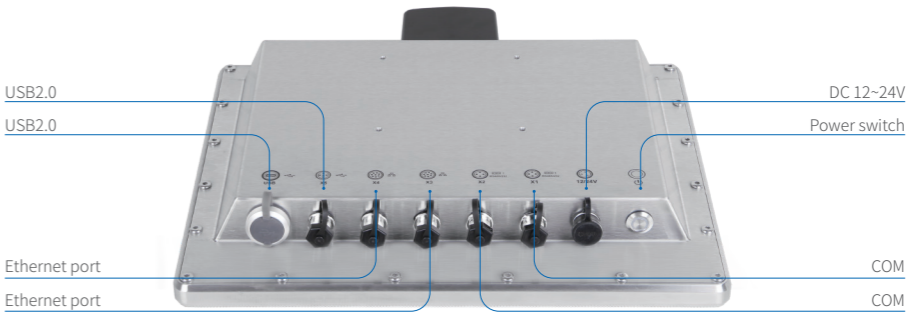
**M12 type plug**  
All interfaces use waterproof aviation plugs which are waterproof, corrosion-resistant, chemical-resistant, detergent-resistant, and disinfectant-resistant.



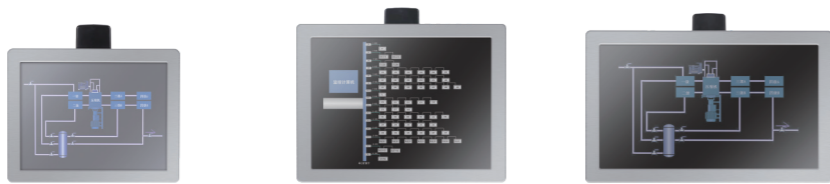
**Supports EtherCAT and Jumbo Frames**  
The Ethernet ports with high speed EtherCAT and jumbo frames support.



**DC12V/24V Power input**  
DC 12V power input, optional DC24V, with surge power, over voltage and reverse polarity protection.



WPXXXXT-R1 SERIES



Model No.		WP1501T-R1	WP1901T-R1	WP2151T-R1
Processor	CPU	Intel® Celeron® J1900		
	Main Frequency	Quad core 2.0GHz		
	L3 Cache	2MB		
	Chipset	Intel Bay trail SOC		
	Memory	1×DDR3L-1333, max 8GB		
	Storage interface	1×mSATA		
I/O	Ethernet	2×Intel 1000Mbps		
	Audio	NULL		
	USB	2×USB2.0		
	COM	2×RS232(option RS485 before ordering)		
	Expansion slot	Mini-PCle slot, Option either Wifi or 4G/3G module (Default: wifi)		
Physical	Dimension (W×H×D)	360mm×284mm×54mm (14.17"×11.18"×2.13")	440mm×365mm×54mm (17.32"×14.37"×2.13")	540mm×332mm×54mm (21.26"×13.07"×2.13")
	Mounting	Wall-mounted, Desktop, VESA	Wall-mounted, Desktop, VESA	Wall-mounted, Desktop, VESA
	Net Weight	5.4kg	7.9kg	8.6kg
OS	OS	Windows7, Windows8, Windows10, Linux		
Power	DC input	DC 12~24V±10% , Support reverse connection protection, over current protection		
	Idle Mode Power Consumption	38.6Watt	42Watt	46Watt
LCD	LCD Type	15" XGA TFT	19" SXGA TFT	21.5" Full HD TFT
	Resolution	1024×768	1280×1024	1920×1080
	Colors	16.2MB	16.7MB	16.7MB
	Active Area (W×H)	304mm×228mm (11.97"×8.98")	376.3mm×301mm (14.81"×11.85")	476mm×268mm (18.74"×10.55")
	Backlight	WLED	WLED	WLED
	MTBF (hour)	50000hrs	30000hrs	50000hrs
	Pixel Pitch (H×V)	0.297×0.297	0.294×0.294	0.248×0.248
	Luminance	350cd/m <sup>2</sup>	250cd/m <sup>2</sup>	250cd/m <sup>2</sup>
	Contrast Ratio	700 : 1	1000 : 1	1000 : 1
Touchscreen	Viewing Angle	(L) 80 / (R) 80 / (T) 80 / (B) 80	(L) 85 / (R) 85 / (T) 80 / (B) 80	(L) 89 / (R) 89 / (T) 89 / (B) 89
	Touchscreen type	Resistive touch screen		
	Resolution	4096×4096		
	Transmittance	> 75%		
	Controller interface	USB		
	Driver Support	Windows 7, Windows8, Windows10, Linux		
	Response Time (touch Pen)	< 5ms		
	Surface Hardness	Mohs' Hardness 3H		
	Click Life	250g / 35,000,000 times		
Environmental	Draw life	250g / 5,000,000 times		
	Work Temperature	-20 ~ 60°C (-4~140°F)(Wide temperature SSD) / 0 ~ 45°C (32~113°F)(General temperature HDD/SSD)		
	Storage Temperature	-30 ~ 80°C (-22~176°F)		
	Relative Humidity	5 ~ 95% RH@40°C (Non-condensation)		
	Vibration	Operating Random Vibration Test 5~500Hz, 1.5Grms@with SSD, follow IEC 60068-2-64		
	Shock	Operating 20G peak acceleration (11ms duration), follow IEC 60068-2-27		
	EMC	CE/FCC Class B		
	Water-proof	The whole machine IP69K		

WPXXXXT-C SERIES



Model No.		WP1501T-C	WP1901T-C	WP2151T-C
Processor	CPU	Intel® Celeron® J1900		
	Main Frequency	Quad core 2.0GHz		
	L3 Cache	2MB		
	Chipset	Intel Bay trail SOC		
	Memory	1×DDR3L-1333, max 8GB		
	Storage interface	1×mSATA		
I/O	Ethernet	2×Intel 1000Mbps		
	Audio	NULL		
	USB	2×USB2.0		
	COM	2×RS232(option RS485 before ordering)		
	Expansion slot	Mini-PCle slot, Option either Wifi or 4G/3G module (Default: wifi)		
Physical	Dimension(W×H×D)	360mm×284mm×54mm (14.17"×11.18"×2.13")	440mm×365mm×54mm (17.32"×14.37"×2.13")	540mm×332mm×54mm (21.26"×13.07"×2.13")
	Cut out size(W×H)	Wall-mounted, Desktop, VESA	Wall-mounted, Desktop, VESA	Wall-mounted, Desktop, VESA
	Net Weight	5.3kg	7.9kg	8.6kg
OS	OS	Windows7, Windows8, Windows10, Linux		
Power	DC input	DC 12~24V±10% , Support reverse connection protection, over current protection		
	Power Dissipation (Max.)	38.6Watt	42Watt	46Watt
LCD	LCD Type	15" XGA TFT	19" SXGA TFT	21.5" Full HD TFT
	Resolution	1024×768	1280×1024	1920×1080
	Colors	16.2MB	16.7MB	16.7MB
	Active Area (W×H)	304mm×228mm (11.97"×8.98")	376.3mm×301mm (14.81"×11.85")	476mm×268mm (18.74"×10.55")
	Backlight	WLED	WLED	WLED
	MTBF (hour)	50000hrs	30000hrs	50000hrs
	Pixel Pitch (H×V)	0.297×0.297	0.294×0.294	0.248×0.248
	Luminance	350cd/m <sup>2</sup>	250cd/m <sup>2</sup>	250cd/m <sup>2</sup>
	Contrast Ratio	700 : 1	1000 : 1	1000 : 1
Touchscreen	Viewing Angle	(L) 80 / (R) 80 / (T) 80 / (B) 80	(L) 85 / (R) 85 / (T) 80 / (B) 80	(L) 89 / (R) 89 / (T) 89 / (B) 89
	Touchscreen type	Capacitive Touchscreen		
	Transmittance	> 87%		
	Controller interface	USB		
	Driver Support	Windows7, Windws 8, Windows 10, Linux		
	Multi-touch	10 points (windows system)		
	Surface Hardness	Mohs' Hardness 7H		
Environmental	Work Temperature	-20 ~ 60°C (-4~140°F)(Wide temperature SSD) / 0 ~ 45°C (32~113°F)(General temperature HDD/SSD)		
	Storage Temperature	-30 ~ 80°C (-22~176°F)		
	Relative Humidity	5 ~ 95% RH@40°C (Non-condensation)		
	Vibration	Operating Random Vibration Test 5~500Hz, 1.5Grms@with SSD, follow IEC 60068-2-64		
	Shock	Operating 20G peak acceleration (11ms duration), follow IEC 60068-2-27		
	EMC	CE/FCC Class B		
	Water-proof	The whole machine IP69K		